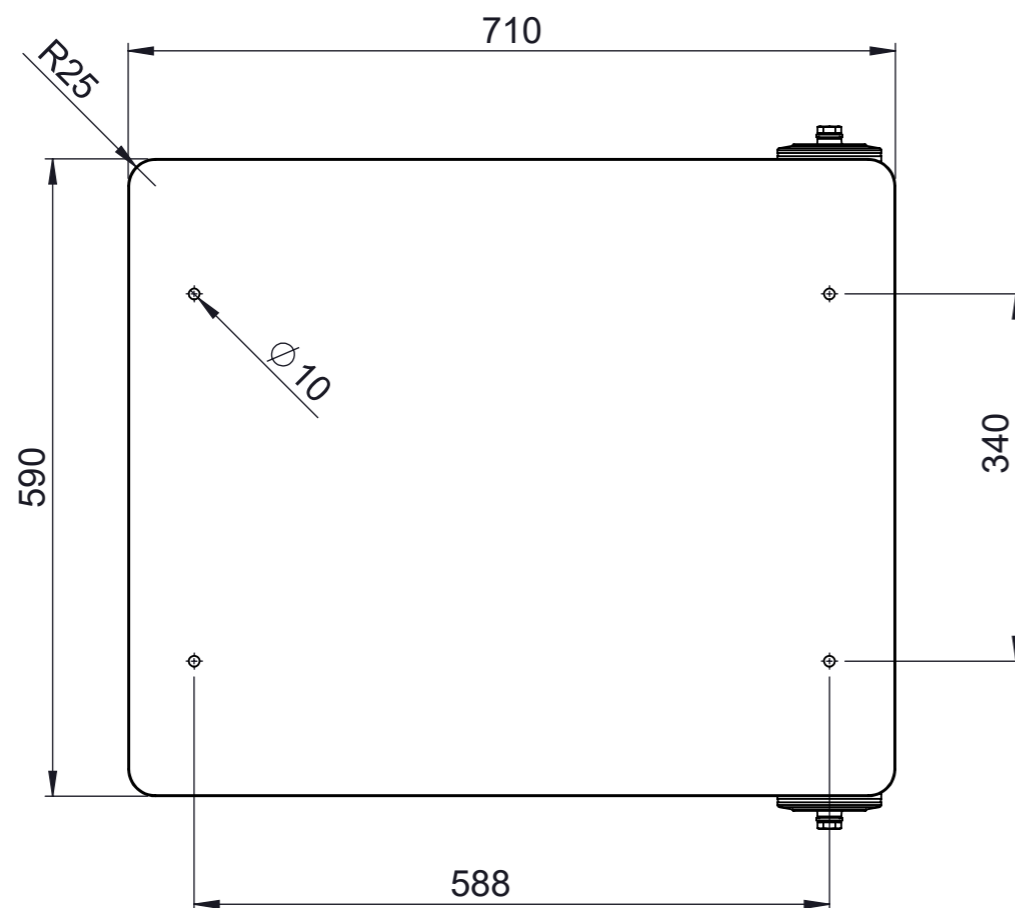


Trolley for Makita
MLT100N table saw.
Welded construction,
made out of 40x40x2
square tubes, using side
fillet welds. Top plate is
made out of waterproof
plywood, 20 mm thick. At
the bottom, rubber feet
and tubeless transport
wheels are used.



13	2	/	Welding Nut, DIN 929, M10x1	Part
12	2	/	Rubber Foot PHI50/M10	Part
11	2	/	End Plate 36x36x5	Part
10	2	/	Transport Wheel (Tubeless), 100x30/12x40, 70 kg	Part
9	6	/	Washer, DIN125, 13	Part
8	2	/	Shaft Bolt, DIN 931, M12x100	Part
7	2	/	Hexagonal Nut, DIN 934, M12	Part
6	2	/	Steel Tube 40x40x2, 465 mm (With Holes)	Part
5	4	/	Steel Tube 40x40x2, 548 mm	Part
4	2	/	Steel Tube 40x40x2, 475 mm	Part
3	2	/	Steel Tube 40x40x2, 475 mm	Part
2	2	/	Steel Tube 40x40x2, 465 mm	Part
1	1	/	Top Plate (Plywood) 710x590x20	Part
Pos.	Qty.	PartNo.	Description	ME

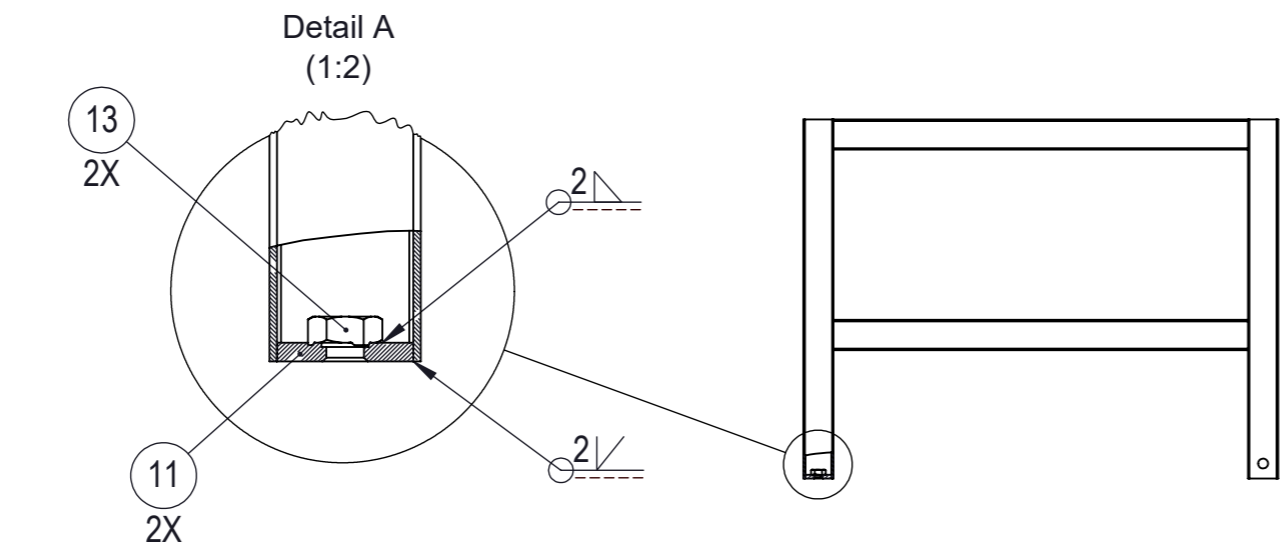
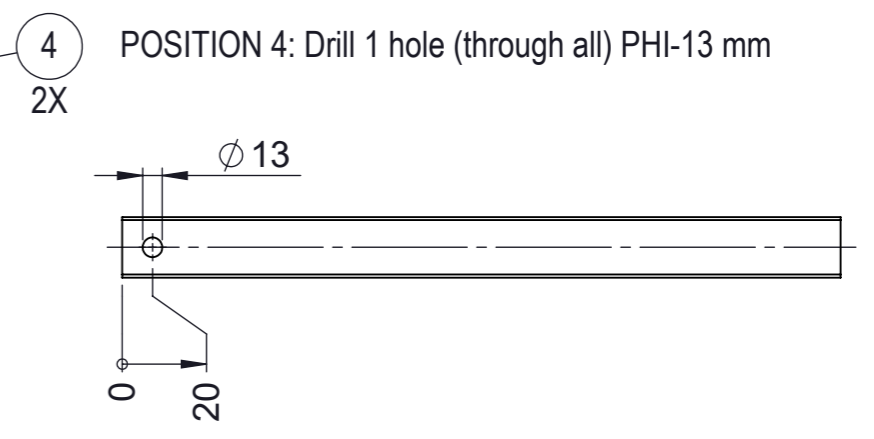
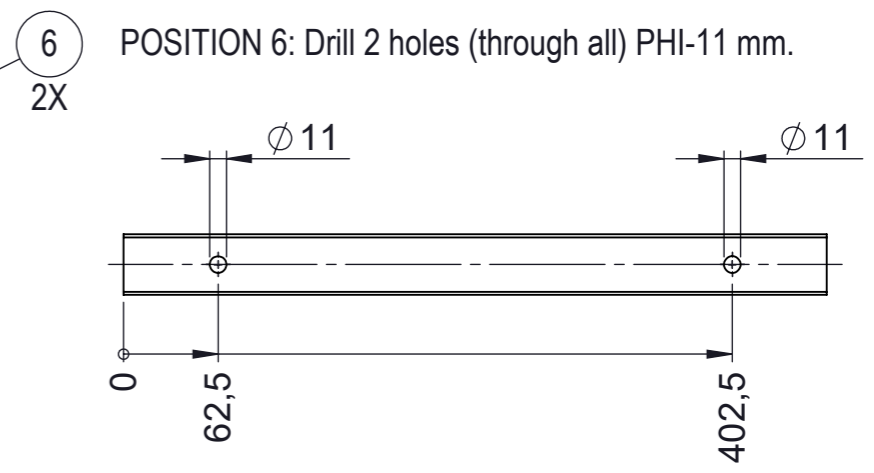
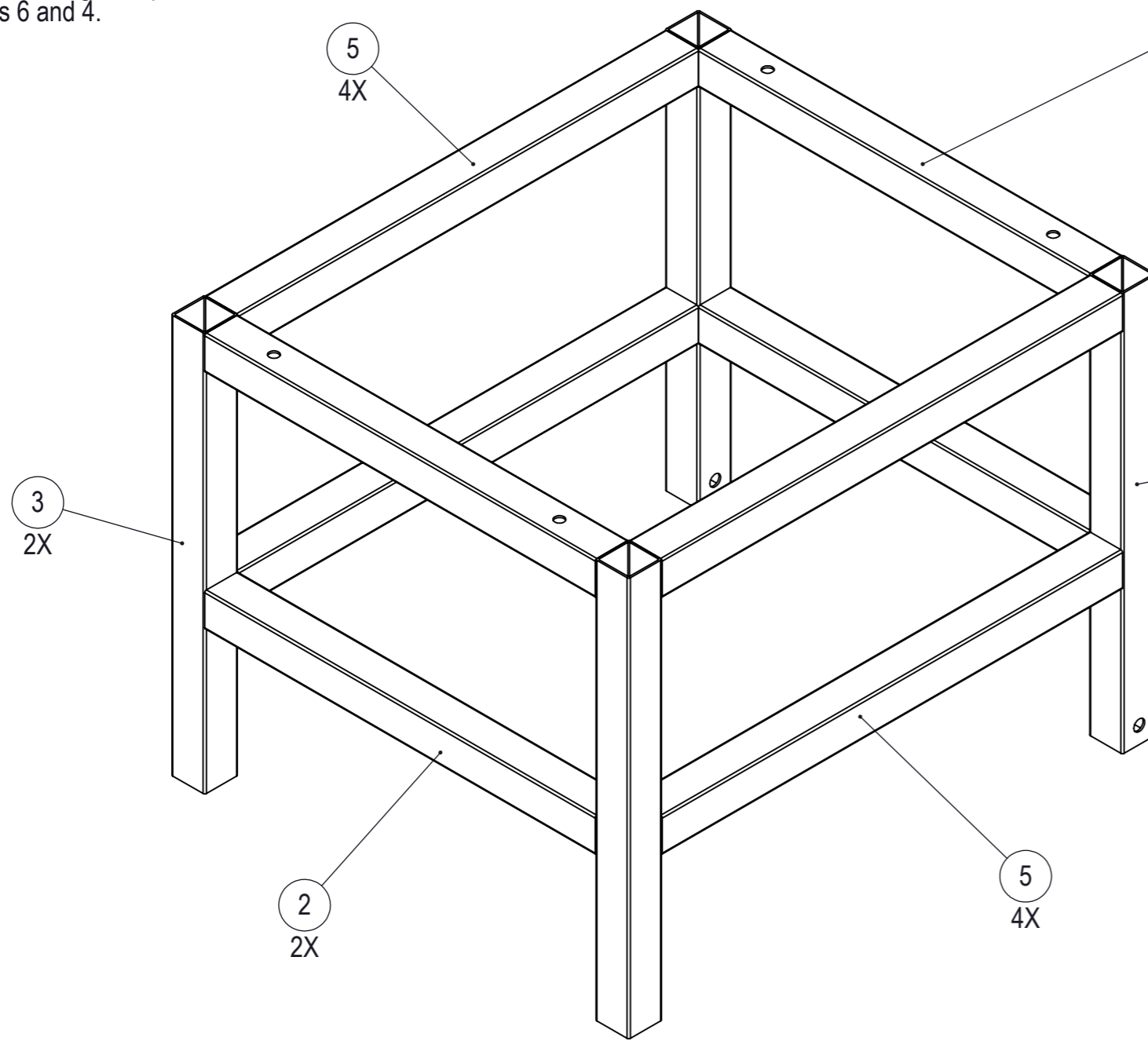


the four thirty-nine
1000 Ljubljana

Project: Makita MLT100N Trolley
Scale: 1 : 7
Made by: Remšak F.
Date: 24.11.2022
Page: 1 / 3

**WELDED
CONSTRUCTION**

Entirely made out of 40x40 steel tubes, with a wall thickness of 2 mm. Note that additional drilling is required - see positions 6 and 4.



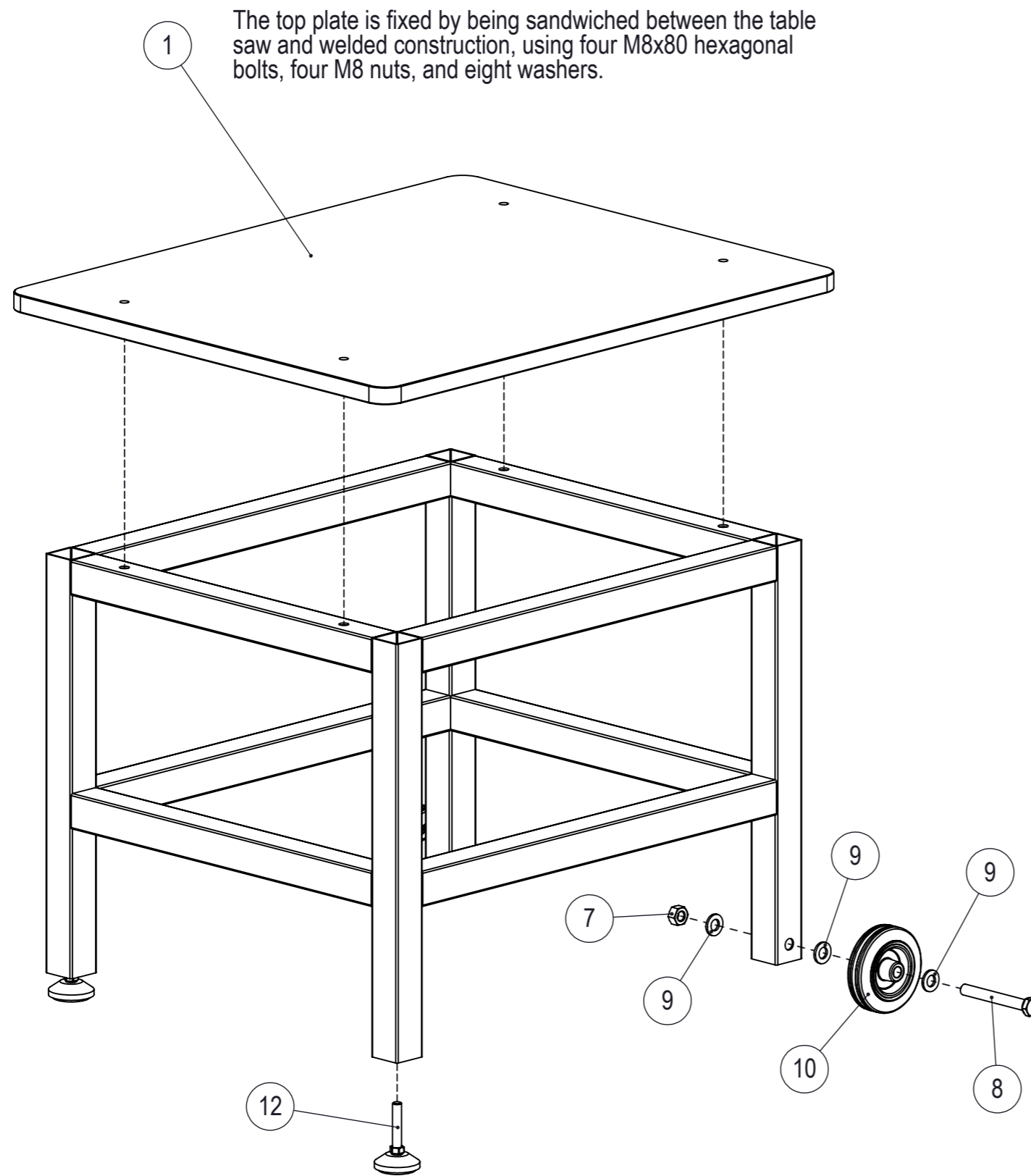
First, weld the welding nut (Pos. 13) to the end plate (Pos. 11). Then, weld the end plate to the inside of the tube (Pos.3).

13	2	/	Welding Nut, DIN 929, M10x1	Part
12	2	/	Rubber Foot PHI50/M10	Part
11	2	/	End Plate 36x36x5	Part
10	2	/	Transport Wheel (Tubeless), 100x30/12x40, 70 kg	Part
9	6	/	Washer, DIN125, 13	Part
8	2	/	Shaft Bolt, DIN 931, M12x100	Part
7	2	/	Hexagonal Nut, DIN 934, M12	Part
6	2	/	Steel Tube 40x40x2, 465 mm (With Holes)	Part
5	4	/	Steel Tube 40x40x2, 548 mm	Part
4	2	/	Steel Tube 40x40x2, 475 mm	Part
3	2	/	Steel Tube 40x40x2, 475 mm	Part
2	2	/	Steel Tube 40x40x2, 465 mm	Part
1	1	/	Top Plate (Plywood) 710x590x20	Part
Pos.	Qty.	PartNo.	Description	ME

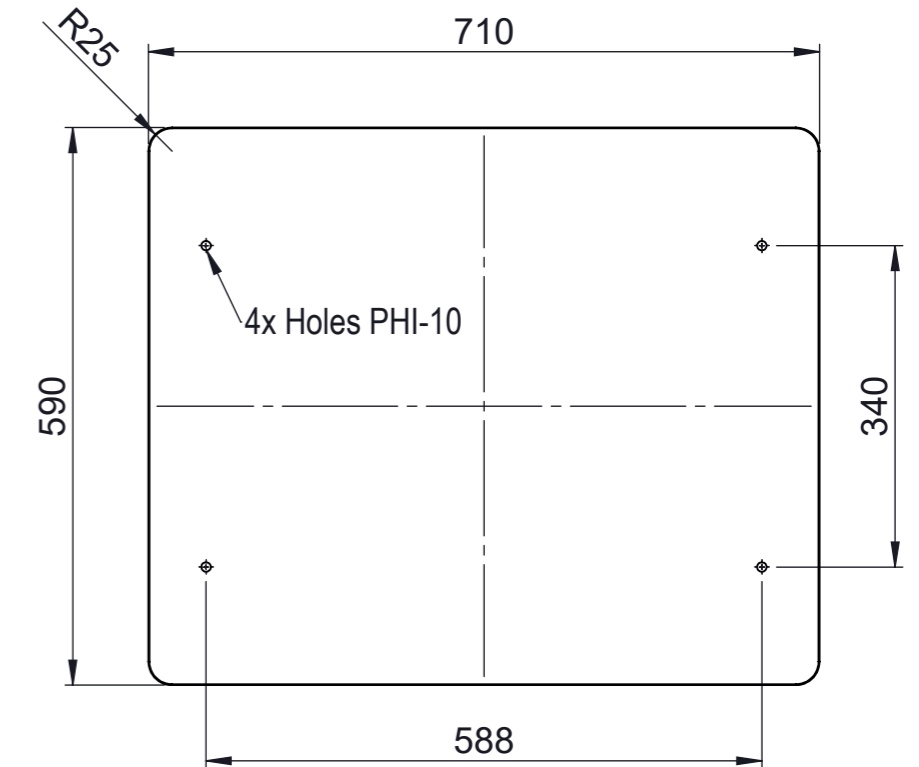


Project:	Makita MLT100N Trolley
Scale:	1 : 5, (1:2)
Made by:	Remšak F.
Date:	24.11.2022
Page:	2 / 3

FINAL ASSEMBLY



The top plate is made of 20 mm thick plywood and is ideally waterproof. If a colored top side is desired, be sure to paint both sides, as plywood tend to bend over time if painted only on one side. You can CNC mill the plate or make it yourself.



13	2	/	Welding Nut, DIN 929, M10x1	Part
12	2	/	Rubber Foot PHI50/M10	Part
11	2	/	End Plate 36x36x5	Part
10	2	/	Transport Wheel (Tubeless), 100x30/12x40, 70 kg	Part
9	6	/	Washer, DIN125, 13	Part
8	2	/	Shaft Bolt, DIN 931, M12x100	Part
7	2	/	Hexagonal Nut, DIN 934, M12	Part
6	2	/	Steel Tube 40x40x2, 465 mm (With Holes)	Part
5	4	/	Steel Tube 40x40x2, 548 mm	Part
4	2	/	Steel Tube 40x40x2, 475 mm	Part
3	2	/	Steel Tube 40x40x2, 475 mm	Part
2	2	/	Steel Tube 40x40x2, 465 mm	Part
1	1	/	Top Plate (Plywood) 710x590x20	Part

Pos.	Qty.	PartNo.	Description	ME
		Project:	Makita MLT100N Trolley	
		Scale:	1 : 6	
		Made by:	Remšak F.	
		Date:	24.11.2022	
		Page:	3 / 3	